

# LEGEND

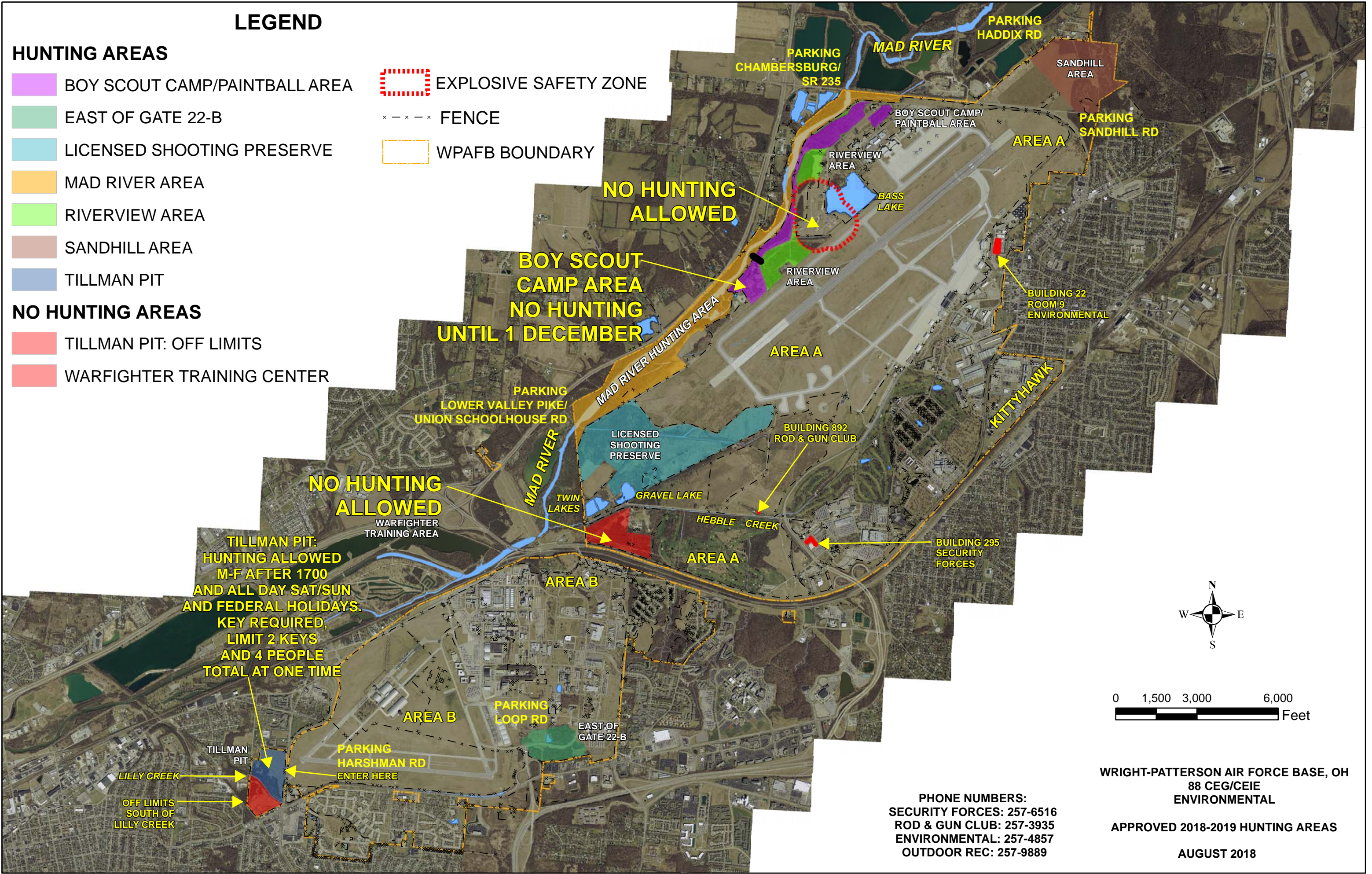
## HUNTING AREAS

- BOY SCOUT CAMP/PAINTBALL AREA
- EAST OF GATE 22-B
- LICENSED SHOOTING PRESERVE
- MAD RIVER AREA
- RIVERVIEW AREA
- SANDHILL AREA
- TILLMAN PIT

## NO HUNTING AREAS

- TILLMAN PIT: OFF LIMITS
- WARFIGHTER TRAINING CENTER

- EXPLOSIVE SAFETY ZONE
- FENCE
- WPAFB BOUNDARY



**NO HUNTING ALLOWED**

**BOY SCOUT CAMP AREA NO HUNTING UNTIL 1 DECEMBER**

**NO HUNTING ALLOWED**  
WARFIGHTER TRAINING AREA

**TILLMAN PIT: HUNTING ALLOWED M-F AFTER 1700 AND ALL DAY SAT/SUN AND FEDERAL HOLIDAYS. KEY REQUIRED, LIMIT 2 KEYS AND 4 PEOPLE TOTAL AT ONE TIME**

LILLY CREEK  
OFF LIMITS SOUTH OF LILLY CREEK

**PHONE NUMBERS:**  
 SECURITY FORCES: 257-6516  
 ROD & GUN CLUB: 257-3935  
 ENVIRONMENTAL: 257-4857  
 OUTDOOR REC: 257-9889

**WRIGHT-PATTERSON AIR FORCE BASE, OH**  
 88 CEG/CEI  
 ENVIRONMENTAL  
**APPROVED 2018-2019 HUNTING AREAS**  
 AUGUST 2018